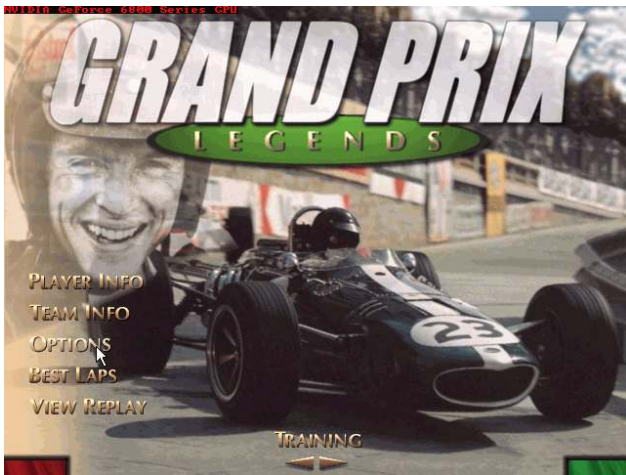


TSW Evolution Setup Guide for Grand Prix Legends



STEP 1: Click on Options



STEP 2: Click the arrow at the bottom to get to the CONTROLS page



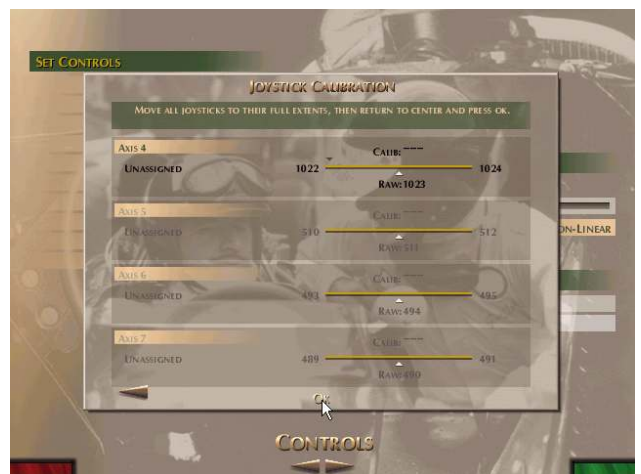
STEP 3: Set the Joystick Driver to DIRECT INPUT



STEP 4: Click on CALIBRATE JOYSTICK(S)



STEP 5: Steer left and right, press gas and brake (do not press hard), then click on the arrow at the bottom right



STEP 6: press the clutch if present, then click on OK



STEP 7: Click on Steering



STEP 8: Turn the wheel to the left, repeat the process for each control assignment



STEP 9: Adjust Linearity (recommended all the way to the left)



STEP 10: Click the green box in the lower right